



Model: C500 Top Drive  
Serial #: N/A

Jan. 8, 2026

Product Bulletin # TDS-273 Rev 1

## C500 BUW Telescopic Tubing Inner Guard Mounting and Inner Tube Wear Pad Improvement

On the C500 top drive, the fasteners securing the Back-up Wrench (BUW) positioner Inner Tube Wear Pad and Retainer Plate are exposed to contact with the mechanical stop pin during operation. Over time, this contact can lead to fastener failure and damage to the threads of the BUW inner tube.

Additionally, access to the telescopic tubing inner guard mounting fasteners is restricted, making replacement of the telescopic tubing difficult when required.

### Affected Units

All C500 Top Drive Back-up Wrenches utilizing:

- Inner Tube P/N: DT11925 and
- Inner Tube Wear Pad and Retainer P/N: 829-35-0 and DT25332

### Recommended Actions

1. Contact Part Sales [parts.sales@canrig.com](mailto:parts.sales@canrig.com) to order the new wear pad modification kit AY26836.

**Table 1: KIT, FIELD UPGRADE, BUW ASSY, 500T, 43.25 STRK (P/N: AY26836)**

Item	Qty	Canrig P/N	Description
1	1	DT27442	WEAR PAD, INNER TUBE, BUW, C500
2	6	SH-0625NC-0125	CAPSCR, HEX SOC HD, 5/8-11UNC x 1.25
3	6	LW-0625-NL	LOCKWASHER, 5/8 NORD-LOCK
4	2	SH-0500NC-0125-W	CAPSCR, HEX SOC HD, 1/2-13UNC x 1.25, W
5	2	LW-0500-NL	LOCKWASHER, 1/2 NORD-LOCK
6	1	DT27999	TAP PAD, INNER SLEEVE GUARD, BUW TUBE, C500
7	2	M19-3009-010	FERRULE, 1/8, OVAL, ALUMINUM
8	3 FT	M10022	WIRE ROPE, 1/8, 7 X 19, STAINLESS
9	1	C10008	THREADLOCKER, LOCTITE 242, 50 mL
10	2	M19-3006-010	FERRULE, 1/16, OVAL, ALUMINUM
11	2 FT	M21-2000-010	WIRE ROPE, 1/16" DIA, STAINLESS

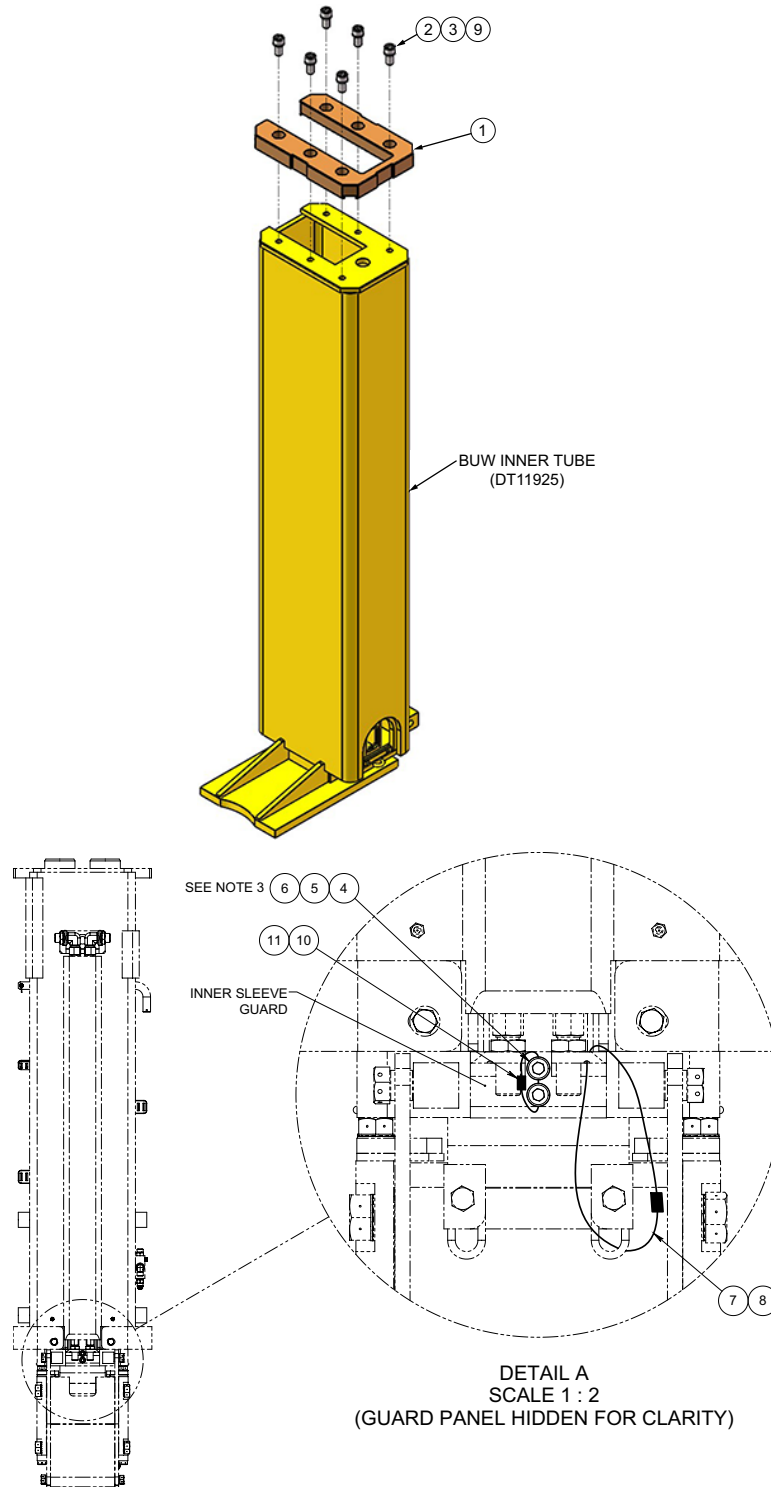


Figure 1: Field Upgrade Kit (AY26836)

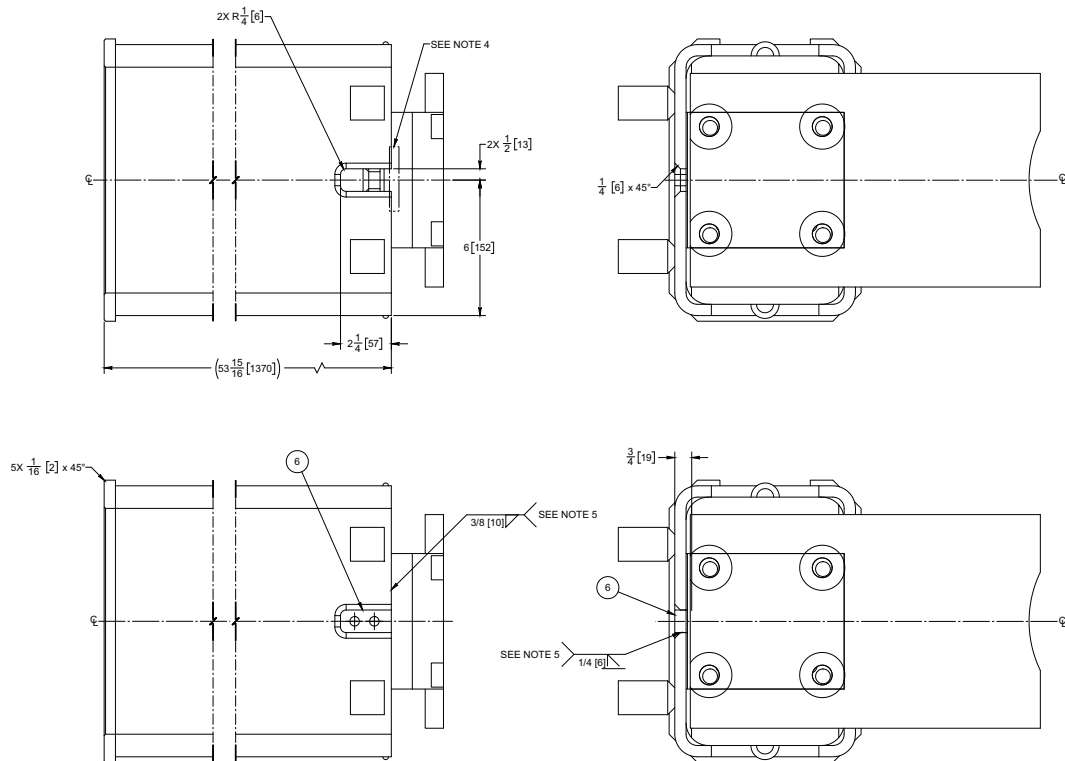


Model: C500 Top Drive  
Serial #: N/A

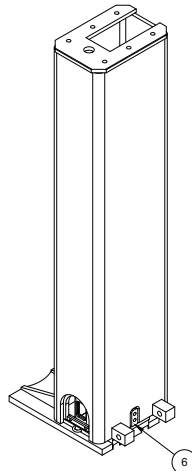
Jan. 8, 2026

2. Modify the BUW Inner Tube as shown below:

- Remove existing weld from area shown in rectangle & perform cut on tube per dimensions. Avoid excessive heat in area close to slide. (Refer to Note #4 in drawing below).
- Weld item #6 to inner tube, then weld between the tube, slide, & item #6. (Refer to Note #5 in drawing below).



- Paint welded area Canrig Yellow as per Canrig specifications ENG 713.





Model: C500 Top Drive Serial #: N/A	Jan. 8, 2026
--	--------------

- After modification to Inner Leg, stamp P/N DT24173 as shown in Figure 2.

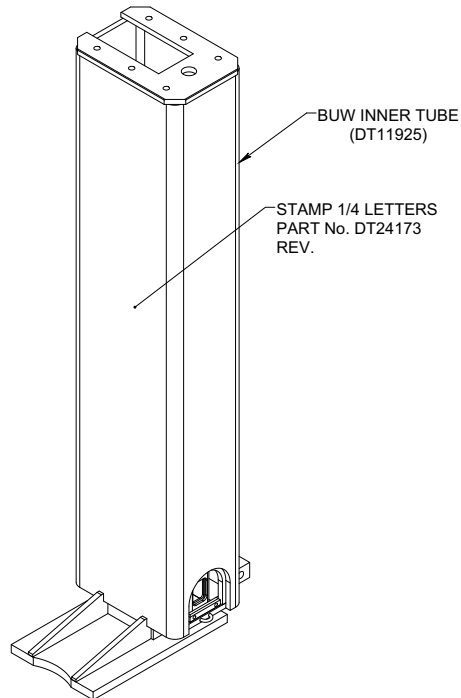


Figure 2: BUW Inner Tube modification (DT11925)

3. Install the wear pad DT27442 and fasteners per modification kit AY26836 in Figure 1 on page 2. Ensure the fasteners are torqued to 149 ft-lb (202 N·m) and that Loctite is applied.