



Model: See Affected Units	Feb. 9, 2026
Serial #: N/A	

Product Bulletin # TDS-276 Rev 1

BUW Telescopic Tubing Inner Guard Mounting and Inner Tube Wear Pad Improvement

During drilling operations, the Back-Up Wrench (BUW) is subjected to impact loads while handling drill pipe. These impacts can cause damage to the rear of the BUW, particularly the telescoping tubing guards, increasing the risk of component damage and potential dropped objects. To mitigate this risk, Canrig has enhanced the BUW telescoping tubing guard design to improve resistance to impact loads.

Additionally, during operation, the fasteners securing the BUW positioner Inner Tube Wear Pad and Retainer Plate are exposed to contact with the mechanical stop pin. Repeated contact over time can result in fastener damage or failure. To address this condition, Canrig has updated the BUW design to eliminate contact with the mechanical stop pin, thereby improving durability and long-term reliability.

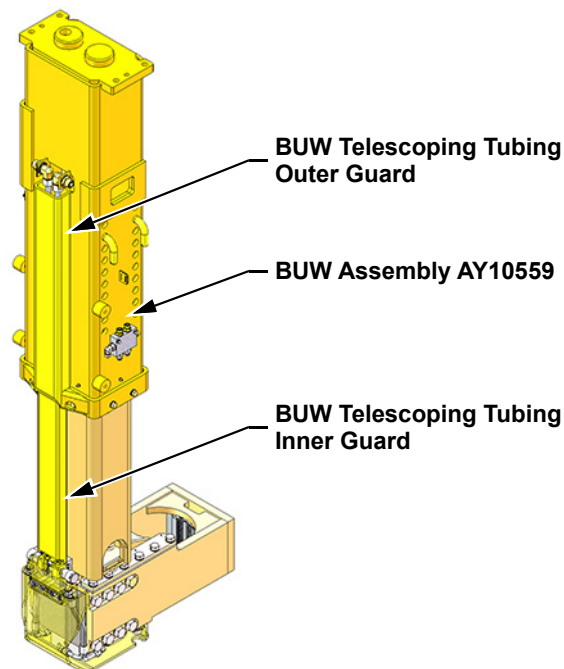


Figure 1: Existing Top Drive Back-up Wrench (AY10559)



Model: See Affected Units

Serial #: N/A

Feb. 9, 2026

Affected Units

All C275 Top Drives utilizing Back-up Wrench Assembly P/N: AY10559.

Upgrade Information

This upgrade requires full disassembly of the Back-up Wrench assembly and shall be performed only by a qualified and trained technician.

The upgrade is not intended for field execution and must be planned and completed in a controlled shop facility with appropriate tooling and resources.

For ordering the Back-up Wrench Telescoping Tubing Guard Improvement and Inner Tube Wear Pad upgrade kit (Part No. AY20292), please contact the Canrig TRUE™ support team (truesupport@canrig.com).

Refer to Table 1 for a complete list of components included in the upgrade kit.

Table 1: KIT, UPGRADE, TUBE GUARD, BUW, C275 (P/N: AY20292)

Item	Qty	Canrig P/N	Description
1	1	DT20774	MODIFICATION, INNER TUBE, BUW, C275
2	1	DT27470	GUARD, INNER SLEEVE, BUW TUBE, 26.75 STR
3	1	DT27482	MANIFOLD, SWIVEL, BUW, C275
4	1	DT27442	WEAR PAD, INNER TUBE, BUW, C500
5	1	DT27471	MODIFICATION, OUTER, TUBE, BUW, C275
6	6	LW-0625-NL	LOCKWASHER, 5/8 NORD-LOCK
7	6	SH-0625NC-0125	CAPSCR, HEX SOC HD, 5/8-11UNC x 1.25
8	2	LW-0500-NL	LOCKWASHER, 1/2 NORD-LOCK
9	2	SH-0500NC-0300-W	CAPSCR, HEX SOC HD, 1/2-13UNC x 3.00, W
10	2 FT	M10022	WIRE ROPE, 1/8, 7 X 19, STAINLESS
11	2	M19-3009-010	FERRULE, 1/8, OVAL, ALUMINUM
12	1 FT	M21-2000-010	WIRE ROPE, 1/16" DIA, STAINLESS
13	2	M19-3006-010	FERRULE, 1/16, OVAL, ALUMINUM



Model: See Affected Units
Serial #: N/A

Feb. 9, 2026

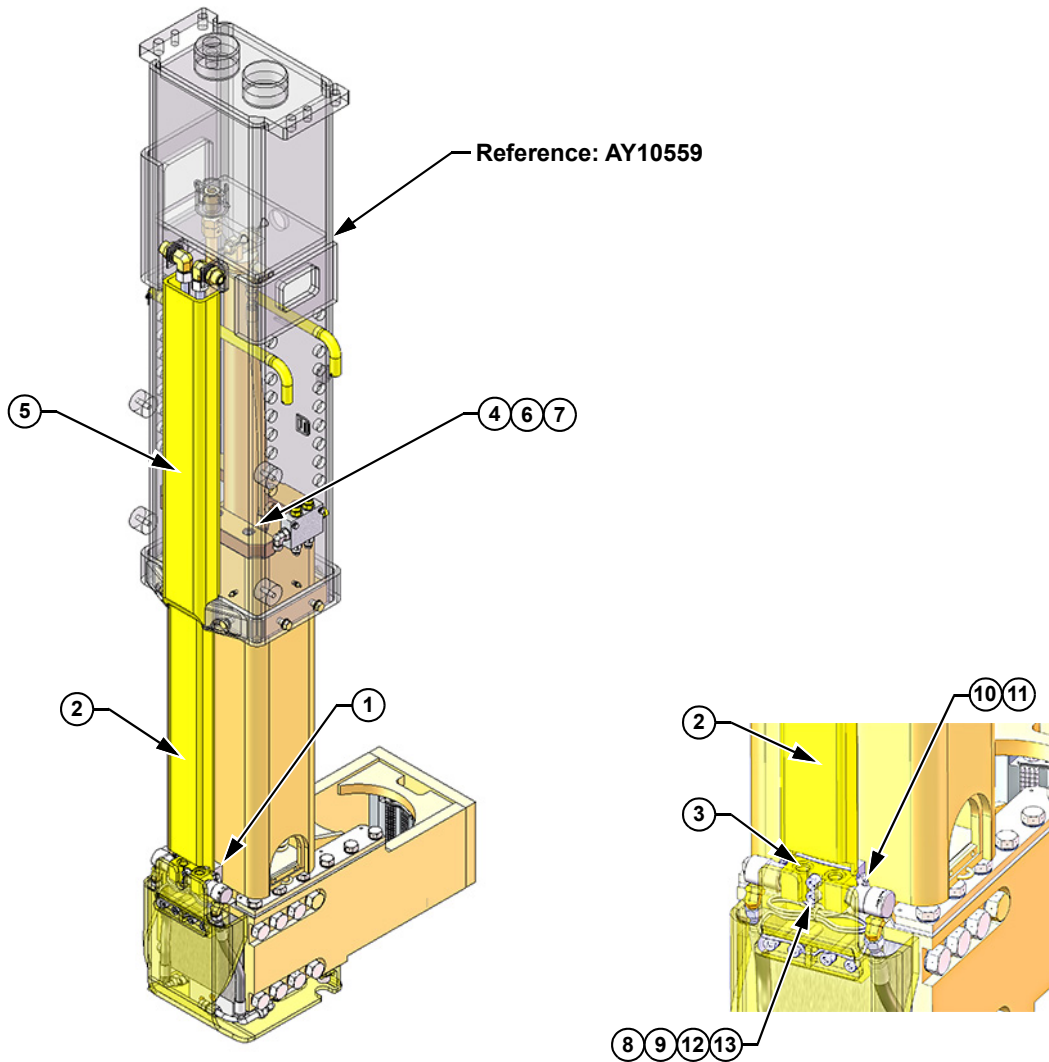


Figure 2: Upgraded Top Drive Back-up Wrench

Contact Rigline 24/7™ if you need assistance.